

TES

Reliable in Quality

จัดจำหน่ายโดย : บริษัท เอฟเวอร์เทค จำกัด



EVERTECH CO., LTD.

TEL: (02)8702884-5, (02)4289793-5

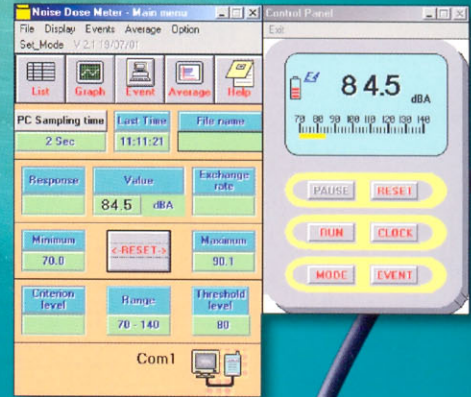
FAX: (02)4287771

E-mail: sales@evertech.co.th

http://www.evertech.co.th

1354/1355 Noise Dosimeter

- Personal Sound Exposure Measurement at work
- Measures % Noise Dose/Exposure Time/Sound Level
- Real-time clock calendar/RS-232 interface (1355)
- Stores data up to 5 Separate events (1355)
- Peak 140 dBA RMS Flags
- Security lock (Power off)



RS-232

TES-1354/1355 Noise Dose Meter (Personal Sound Exposure Meters)

Features :

- Pocket Size/light weight
- Measures % Noise Dose/ Exposure Time / Sound Level
- Peak 140dBA & 115dBA RMS Flags
- Real-time clock calendar/RS-232 interface
- Accurate & very easy to use
- Security lock (Power off)
- Stores data up to 5 Separate events
- Occupation health application

General Specifications :

Model	TES-1354	TES-1355	Model	TES-1354	TES-1355
Applicable standards	ANSI S1.25-1991 ISO-1999 BS 6402:1983		Time weighting	FAST , SLOW	
Digital display	.01~99.99% DOSE		Microphone	1/2 inch electret condenser microphone	
Criterion level	80, 84, 85, 90dB		Operating temperature & humidity	0~50°C (32 to 122°F) 10~90%RH	
Threshold level	80, 90, 70~90dB (1dB step)				
Exchange rate	3dB , 4dB , 5dB or 6dB		Storage Temperature & humidity	-10~+60°C (14 to 140°F) 10~75%RH	
High level Detector	115dBA				
Peak flag	140dB		Power supply	4pcs size AAA Alkaline Battery	
Measuring range	70-140dBA		Battery life	38 hours	34 hours
Accuracy	±1.5dBref 94 dB @1KHz		Dimensions	106(L)×64(W)×34(H)mm	
RS-232	Not provided	provided	Weight	approx. 350g (include batteries)	
Real time clock	Not provided	provided	Event	Not provided	Stores data up to 5 separate events
Resolution	0.1dB				
Frequency response	20Hz~10KHz		Optional Sound Calibrator	TES-1356	
Frequency weighting	A				
Accessories	Instruction manual , Carrying case, batteries, Calibration Screwdriver (TES-1354)				
Accessories	Instruction manual , Software for Windows™ , RS-232 Cable , 9 pin to 25pin adaptor, Carrying case, batteries, Calibration Screwdriver (TES-1355)				

Occupational Noise Exposure Standard

Country	Criterion level dBA	Exposure time	Exchange Rate	MAX SPL	Peak SPL	Allowable / per day
Germany	90	8	—	—	—	—
France	90	40	—	—	—	—
Belgium	90	40	5	110	140	100
U.K.	90	8	3	135	150	—
Ireland	90	—	—	—	—	—
Italy	90	8	5	115	140	—
Denmark	90	40	3	115	—	—
Sweden	85	40	3	115	—	—
U.S.A.	90	8	5	115	140	100
Canada	90	8	5	115	140	—
Australia	90	8	3	115	—	—
Japan	85	8	9	—	—	—
Taiwan	90	8	5	115	140	—

※ The above is the reference standard. For latest regulation, please check with your authorities.



TES ELECTRICAL ELECTRONIC CORP.

7F, No.31 Lane 513, Rui Guang Rd., Neihu Dist, Taipei , Taiwan

Tel : (02) 2799-3660 Fax : 886-2-2799-5099

E-mail : tes@ms9.hinet.net <http://www.tes.com.tw>