

Uee Series- Portable Hardness Tester Uee910



WARRANTY
3 YEARS



USB



Software



LCD

Functions & Features

- High quality and precision.
- Automatically identify 7 types of Impact devices for special application.
- Freely switch to hardness scales HRB, HRC, HV, HB, HS,HL.
- Direct calibration on HL,HRC,HB.
- PC Software for data transmission, analysis and measurement reports printing.
- Test at any angle, even upside down.
- Large LCD screen with back-light, showing all functions and parameters.
- Upper and lower limit and sound alarm.
- Conversion to tensile strength (U.T.S).
- 3 years warranty and life-long services.

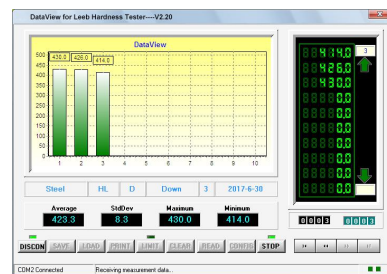
Measuring Materials

- 10 types of metals: steel and cast steel, alloy tool steel, stainless steel, gray cast iron, nodular cast iron, cast aluminum alloy, copper zinc alloys, copper and tin alloy, copper, forged steel.

Technical Parameters

Model	Uee910
Measuring Range	(170-960)HLD,(17.9-69.5)HRC,(19-683)HB,(80-1042)HV,(30.6-102.6)HS, (13.5-101.7)HRB
Hardness parameter	HL, HRC,HRB, HS,HB,HV
Accuracy	±6HLD
Memory	600 groups
PC Connection	Available
Battery	2*AA
Operating Temperature	-20℃~+60℃
Dimensions	163×78×33mm
Weight	240g
Standard Configuration	Main unit, Impact Device type D, Calibration block,Small supporting ring, USB cable, Software, Backup accessories(Impact ball*1, Cable*1, Spanner *1), Cleaning brush,Operation manual,Certificate.
Optional Accessories	Optional Impact Devices(D,DC,DL,D+15,G,C,E), Shaped support rings, Testing blocks

Pictures



Uee Series-Portable Hardness Tester Uee912



WARRANTY
3 YEARS



USB



Software



LCD

Functions & Features

- High quality metal shell
- Precise measuring performance
- Automatically identify 7 types of Impact devices for special application
- Direct calibrate on HL, HRC, HB, and freely switch to 6 different hardness scales
- Test at any angle, even upside down
- Large LCD screen with back-light, showing all functions and parameters
- Conversion to tensile strength (U.T.S)
- PC Software for data transmission, analysis and measurement reports printing
- 3 years warranty and life-long services

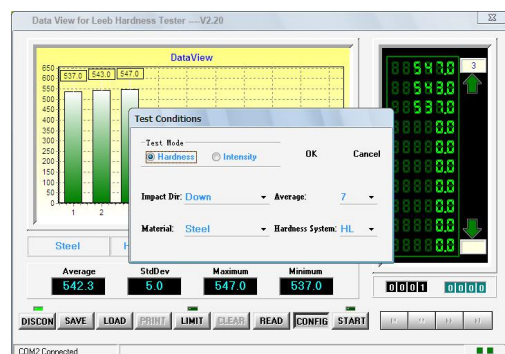
Measuring Materials

- 10 types of metals: steel and cast steel, alloy tool steel, stainless steel, gray cast iron, nodular cast iron, cast aluminum alloy, copper zinc alloys, copper and tin alloy, copper, forged steel.

Technical Parameters

Model	Uee912
Measuring Range	(170-960)HLD,(17.9-69.5)HRC,(19-683)HB,(80-1042)HV,(30.6-102.6)HS, (13.5-101.7)HRB
Hardness parameter	HL, HRC,HRB, HS,HB,HV
Accuracy	±6HLD
Memory	600 groups
PC Connection	Available
Battery	2*AA
Operating Temperature	-20℃~+60℃
Dimensions	130×70×30mm
Weight	300g
Standard Configuration	Main unit, Impact Device type D, Calibration block,Small supporting ring, USB cable, Software, Backup accessories(Impact ball*1, Cable*1, Spanner *1), Cleaning brush, Coin screwdriver, Operation manual,Certificate.
Optional Accessories	Optional Impact Devices(D,DC,DL,D+15,G,C,E), Shaped support rings, Testing blocks

Pictures



Uee Series - Portable Hardness Tester Uee915



WARRANTY
3 YEARS



~220V



USB



Software



LCD

Functions & Features

- High stability and precision
- With built-in thermal printer
- Rechargeable Li-ion battery and auto power-off function
- Direct calibrate on HL, HRC, HB, and freely switch to 8 different hardness scales
- Automatically identify 7 types of Impact devices for special application
- Test at any angle and direction, even upside down
- Conversion to tensile strength (U.T.S)
- PC Software for data transmission, analysis and measurement reports printing
- 3 years warranty and life-long services

Measuring Materials

- 10 types of metals: steel and cast steel, alloy tool steel, stainless steel, gray cast iron, nodular cast iron, cast aluminum alloy, copper zinc alloys, copper and tin alloy, copper, forged steel.

Technical Parameters

Model	Uee915
Measuring Range	(170-960)HLD,(17.9-69.5)HRC,(19-683)HB,(80-1042)HV,(30.6-102.6)HS, (59.1-88)HRA, (13.5-101.7)HRB
Hardness parameter	HL, HRC,HRB, HRA,HRV,HS,HB,HV,HSD
Accuracy	±6HLD
Memory	600 groups
PC Connection	Available
Printer	Build-in High-speed Thermal Printer, Width for printer paper:44.5±0.5mm
Battery	Rechargeable Li-ion battery
Operating Temperature	-20℃~+60℃
Dimensions	230×86×46mm
Weight	450g
Standard Configuration	Main unit, Impact Device type D, Calibration block,Power adapter,Small supporting ring, USB cable, Software, Backup accessories(Impact ball*1, Cable*1, Spanner *1), paper of Printer, Cleaning brush,Operation manual,Certificate.
Optional Accessories	Optional Impact Devices(D,DC,DL,D+15,G,C,E), Shaped support rings, Testing blocks,Paper for Printer

Pictures



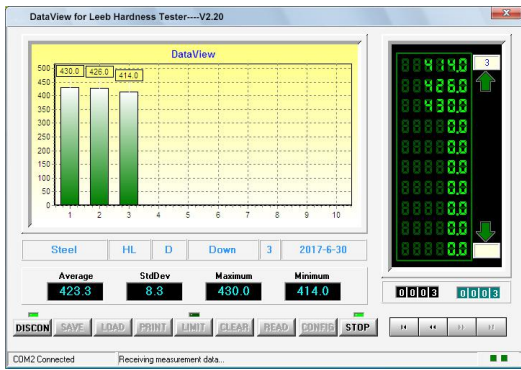
High Precision



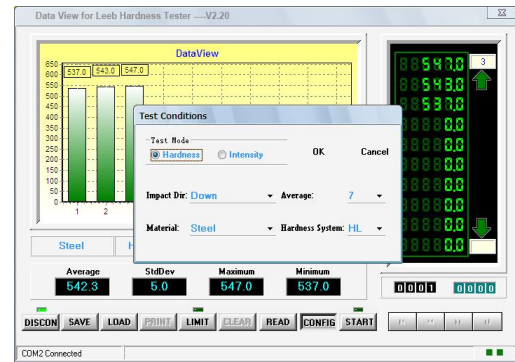
Calibration on HLD/HRC/HB Blocks



Water-proof packing box



Receiving Measurement Data



Select Test Conditions

Portable Hardness Tester



Optional Impact Devices (Probes)



Supporting Rings

Application Fields

- The bearings and other parts, heavy work-pieces, metal material, pressure vessel, failure analysis of turbine generator unit and equipment
- Mechanical or permanent assembly components have been installed, the test space is very narrow, requires the original record regular test results
- Large work-piece within a wide range of more rapid test measurement site

Measuring Conditions

- The weight of measuring object must be more than 2kg.
- The thickness must be more than 10mm.
- The surface roughness must be no less than 1.6 μ m.

Tips: If do not meet the above conditions, the measuring object should be laminated with steel substrate by coupling agents.

Special Supporting Ring (use for different shaped surface)

Model	Notice	Model	Notice
Z10-15	Outside cylinder R10-15	K10-15	Outside sphere R10-15
Z14.5-30	Outside cylinder R14.5-	K14.5-30	Outside sphere R14.5-30
Z25-50	Outside cylinder R25-50	HK11-13	Inside sphere R11-13
HZ11-13	Inside cylinder R11-13	HK12.5-17	Inside sphere R12.5-17
HZ12.5-17	Inside cylinder R12.5-17	HK16.5-30	Inside sphere R16.5-30
HZ16.5-36	Inside cylinder R16.5-30	UN	Outside cylinder, R10-∞

Measuring Range Table

Material	Hardness	Impact Device (Probe)					
		D/DC	D+15	C	G	E	DL
Steel & cast Steel	HRC	17.1~68.5	19.3~67.9	20.0~69.5		22.4~70.7	20.6~68.2
	HRB	59.6~99.6			47.7~99.9		37.0~99.9
	HRA	59.1~85.8				61.7~88.0	
	HB	80~651	80~638	80~683	90~646	83~663	81~646
	HV	83~976	80~937	80~996		84~1042	80~950
	HS	32.2~99.5	33.3~99.3	31.8~102.1		35.8~102.6	30.6~96.8
Forged Steel	HB	142~651					
Alloy Tool Steel	HRC	17.1~67.1	19.8~68.2	20.0~69.5		22.6~70.2	
	HV	83~976	80~935	80~996		82~1009	
Stainless Steel	HRB	59.6~99.6					
	HB	140~651					
	HV	83~976					
Gray Cast Iron	HRC						
	HB	140~334			92~326		
	HV						
GC Iron	HB	140~387			140~364		
Cast Alum.	HB	30~159		23~210	32~168		
	HRB	23.8~84.6		22.7~85.0	23.8~85.5		
	HV	83.2~648.2					
Copper-Zinc Alloy (Brass)	HB	40~173					
	HRB	13.5~95.3					
Bronze	HB	60~290					
Copper	HB	45~315					