

Elitech®

*Innovation Preceding All*

Elitech®



Elitech iCold®



**INDUSTRIAL REFRIGERATION &**

**PROCESS TEMPERATURE CONTROL SOLUTIONS**

 Elitech Technology, Inc.  
2528 Qume Dr, Ste 2 San Jose,  
CA 95131 United States  
 Tel: (+1)408-844-4070  
 Email: support@elitechus.com  
 Website: www.elitechus.com

QZY-20201221-V1.0

# COMPANY PROFILE

Elitech Technology Inc.

Tel: (+1)408-898-2866

Website: [www.elitechus.com](http://www.elitechus.com)

Add: 2528 Qume Dr, Ste 2 San Jose, CA 95131, United States

Elitech (UK) Limited

Elitech Polska Sp. Z.O.O.

Elitech Russia Ltda

Elitech China

Elitech Brazil Ltda



Elitech offers a high level of monitoring and maintenance in the refrigeration field, IoT technology, wireless and smart tools, quality, and safety certificates. Our main goal is to always provide innovative alternatives to Our products and services served many small to large corporations in industries such as lifesceience, medical and phamarceutical, food and collection storage in an entire logistric process from manufacturing, handling, storage and distribution, and many more. Over the years, we always have been focusing on innovation surrounding our customer's needs. Our wide range of products shows our company development and efforts to make our products more efficient and convenient.

Elitech has fully equipped with R&D testing capable of completing industrial four-level EMC electromagnetic interference testing experiments. Environmental performance tests run in our labs, as well as lighting, cycle drop, and electrostatic discharge test along with high/low-temperature impact and heating alternating. In addition, Elitech counts with 200 qualified engineers. All our technicians and engineers are prompt to assist you with any questions, validations, or requirements that you may have. Elitech's team is spread in all continents, allowing you to contact us at any time, anywhere.



# RESEARCH LABORATORY

The scientific research laboratory of Elitech is equipped with Swiss imported 7637 test system, electrical transient conduction group pulse generator, ultra-low temperature verification thermostat, dispersive X-ray fluorescence spectrometer, American Agilent comprehensive analyzer, high-precision temperature, and humidity verification system, lightning surge generation There are more than 120 sets of instruments and equipment, such as In addition to product performance testing and environmental testing, it can also complete industrial level four, EMC electromagnetic interference testing, such as lightning surge, cycle drop, and electrostatic discharge, as well as extreme tests such as high and low-temperature impact, high and low temperature damp and heat alternation.

# TABLE OF CONTENTS



THERMOSTAT	01
SPLIT ELECTRICAL CONTROL PANEL	03
COLD ROOM TEMPERATURE CONTROLLER	09
ELECTRICAL CONTROL BOX	13
ALL-PURPOSE PROTECTOR	21
Elitech iCold Platform	23

THERMOSTAT

STC-1000 Series



Overview

STC-1000 Series is an integrated plug-and-play temperature and humidity controller. It has a temperature and humidity integrated probe and is pre-connected to two output sockets to control temperature and humidity simultaneously.

The large LCD screen intuitively displays temperature, humidity, and use parameters. With the three-key design, it enables quick parameter setting, such as alarm limit, calibration, protection time, unit switching, etc.

Features

- NO WIRING**  
Its large LCD screen, simple 3-button, and pre-wired design making it easier to be used with plug and play.
- DUAL RELAY OUTPUT**  
Be able to connect with cooling and heating device at the same time.
- WIDE TEMPERATURE RANGE**  
It measures from -49°F ~ 239°F and starts cooling or heating according to set parameters, which helps to keep a desired temperature all the time.
- MULTI-FUNCTIONAL SETTING**  
Its functions include setting high or low alarms, start delay, temperature calibration, °C/°F and etc.
- SAFE&RELIABLE**  
Comply with CE, FCC standard and adopt fireproof ABS case, UL94 V-0 for safety.

Technical Parameter Table

Model	STC-1000Pro	STC-1000WiFi	STC-1000Pro-TH	STC-1000WiFi-TH
Input	Temperature Only		Temperature&Humidity	
Output	Heating/Cooling & Humidifying/Dehumidifying			
Power Supply	Heating&Cooling		110~240VAC, 50/60Hz	
Temperature Control Range	-40~110°C/-40~230°F		-5~70°C/23~158°F	
Temperature Accuracy	±1°C/±2°F		±0.5°C/±1°F	
Temperature Resolution	0.1°C/0.1°F			
Humidity Control Range	/	/	5~99%RH	5~99%RH
Humidity Accuracy	/	/	±5%RH	±5%RH
Humidity Resolution	/	/	0.1%RH	0.1%RH
Relay Output Capacity	10A (resistive)/100~240VAC			
Output Power	2200W (resistive) in total/200W (inductive) per channel @220VAC 1100W (resistive) in total/100W (inductive) per channel @110VAC			
Total Power Consumption	< 5W			
Working Environment	0~60°C/32~140°F			
Storage Environment	-10~70°C/14~140°F			
Length of Power Probe	1.5m			
Length of Output Power Probe	0.3m			
Enclosure Size	165*60*32 mm			
Length of Sensor Cable	2m (including sensor tip)			
Connection	/	WiFi (2.4GHz)	/	WiFi (2.4GHz)

Application

Scenario



Aquarium



Pet Breeding



Incubation



Seedling Mat



Green House



SPLIT ELECTRICAL  
CONTROL PANEL  
LS-200 Series



Overview

LS-200 series electric control box is an electric control box specially developed for small and medium-sized cold storage. Large screen touch control integrates temperature display, current display, and clock display.

Features

- SPLIT DESIGN**  
The main controller is separated from the display board, which can realize the remote control up to 200 meters, and ensures convenient and safe installation.
- ENERGY SAVING**  
Built-in one-key energy-saving function, can use peak and valley points to achieve night defrosting, automatic temperature adjustment.
- PARAMETER SETTINGS ON APP**  
Parameters can be set on mobile APP via Bluetooth, easy and simple settings without reading the user manual.
- REAL-TIME ALARMS**  
Real-time reporting of equipment status through SMS, APP, email, realizing 24-hour real-time monitoring of cold storage.
- FUNCTION**  
Refrigeration, defrosting, fan, light four-way output, alarm and clock, two storage temperature sensors.

Technical Parameter Table											
Model	LS-200						ECB-LS230				
Input	3 Temperature & 3 Digital Signal						2 Temperature				
Output	Alarm   Compressor   Fan   Light   Defrosting						Alarm   Compressor   Fan   Defrosting				
	10A	110V: 1.5HP	16A	16A	30A		10A	18A: 5HP	16A	30A	
		220V: 3HP						65A: 30HP			
Power Supply	1-phase 100~256VAC, 50/60Hz						3-phase 380VAC±10%, 50/60Hz				
Temperature Measurement Range	-49~119°C/-56~246.2°F						-49~119°C/-56~246.2°F				
Temperature Accuracy	-20~50°C±1°C, other±1.5°C; -4~122°F±2°F, other ±3°F						-20~50°C±1°C, other±1.5°C; -4~122°F±2°F, other ±3°F				
Temperature Control Range	-49~119°C/-56~246.2°F						50~50°C/-58~122°F				
Temperature Resolution	0.1°C/1°C or 1°F						0.1°C/1°C or 1°F				
Working Environment	10~65°C/14~149°F						10~65°C/14~149°F				
Storage Environment	-20~75°C/-4~167°F						-20~75°C/-4~167°F				
Type of Sensor	NTC (10KΩ/25°C, B value 3435K)						NTC (10KΩ/25°C, B value 3435K)				
Length of Sensor Probe	2m						5m/8m				
Communication	RS-485/WiFi						RS-485/WiFi				
Protection	/						Phase sequence, lack of phase, and overload protection				

Application  
Scenario



SPLIT ELECTRICAL CONTROL PANEL  
LTC-100



Overview

The LTC-100 is used for temperature control of medium and low-temperature cold storage. It is composed of an operation display panel and a controller, with 4P wire-pressing terminals reserved, and the two parts can be connected for communication through a four-core signal line. The controller has three relay outputs to control the compressor, evaporator fan, and electric heating or hot gas defrosting two NTC sensor inputs, one is used to measure temperature, one is installed on the evaporator, to measure the start and stop temperature.

Features

- **HIGH ACCURACY**  
High-precision sensor and high-precision chip that can withstand 3000 times of high and low-temperature shocks, with small drift and more stable performance.
- **WALL-MOUNTED PANEL**  
Large wall-mounted display panel, clear and intuitive readings shown.
- **C/F SWITCH**  
Support Celsius and Fahrenheit two temperature units.
- **SPLIT DESIGN**  
The main controller is separated from the display board, which can realize the remote control up to 200 meters.
- **FUNCTION**  
Refrigeration, defrosting, fan three-way output; storage temperature, defrosting temperature dual sensors.

Technical Parameter Table

Model	LS-200
Input	Room Temperature & Defrosting Temperature
Output	Compressor, Fan, Defrosting
Power Supply	100~240VAC, 50/60Hz
Overall Power Consumption	<5W
Temperature Measurement Range	-50~50°C/-58~122°F
Temperature Accuracy	±1°C/±2°F
Temperature Control Range	-50~50°C/-58~122°F
Temperature Resolution	0.1°C/0.1°F
Working Environment	0~60°C/32~140°F
Storage Environment	-30~75°C/-22~167°F
Type of Sensor	NTC (10KΩ/25°C, B value 3435K)
Length of Sensor Probe	2m

Application  
Scenario



Temperature control of medium and low temperature cold storage



SPLIT ELECTRICAL  
CONTROL PANEL  
LTC-500B



## Overview

LTC-500B is a split controller with up to 7 temperature sensors and 2 optional digital inputs. It is suitable for split controllers for small and medium-sized cold storage.

## Features

- MULTI-PROBES**  
Comes with up to 7 temperature sensors, 2 auxiliary inputs.
- SAFETY&QUALITY**  
It has current detection and protection, phase sequence protection, and various alarm functions, and business model and non-business model control functions.
- CLEAR DISPLAY**  
Using a 7-inch industrial-grade touch screen, clear display of working status in real-time.
- REMOTE MONITORING**  
With the RS485 communication function, an external relay module can be connected to realize real-time monitoring on the cloud platform, remote parameter setting, and other functions.
- FUNCTION**  
Refrigeration, defrosting, fan, water pump, and auxiliary output.

### Technical Parameter Table

Model	LS-200
Input	7 Temperature Sensors
Output	Compressor, Fan, Defrosting, Pump, 2 digital inputs
Power Supply	110VAC, 50/60Hz
Overall Power Consumption	<12W
Temperature Measurement Range	-45~100°C/-49~212°F
Temperature Accuracy	±1°C/±2°F
Temperature Control Range	-40~85°C/-40~185°F
Temperature Resolution	0.1°C/0.1°F
Current Measurement Range	0~80A
Current Accuracy	±3%
Current Resolution	0.1A
Working Environment	-5~60°C/23~140°F
Storage Environment	-20~75°C/-4~167°F
Type of Sensor	NTC (10KΩ/25°C, B value 3435K)
Length of Sensor Probe	2m

## Application Scenario



COLD ROOM TEMPERATURE  
CONTROLLER

MTC-1000 Series



Overview

MTC-1000 is applied to the controller of seafood machine, has the functions of refrigeration, heating, defrosting and so on. It has the functions of temperature measurement, display, control, and manual power on and off; temperature sensor failure alarm and temperature over-limit alarm.

Features

- Temperature measurement, display, control, refrigeration, defrosting, fan, alarm, etc. output
- Temperature over-limit alarm, over-range, and sensor failure alarm, etc.

Application  
Scenario



Small Medium-Size  
Cold Rooms



Supermarket  
Cold Storage



Hotel



Kitchen

Technical Parameter Table

	Model	MTC-1000	MTC-5060	MTC-5080
Temperature	Temperature Control Range	-40~110°C/-40~230°F	-40~110°C/-40~230°F	-50~50°C/-58~122°F
	Temperature Resolution	0.1°C/0.1°F		
	Temperature Accuracy	-30~50°C±1°C, other±1.5°C	-30~50°C±1°C, other±1.5°C	±1°C
Output	Temperature Sensor Type	NTC (10KΩ/25°C, B value 3435K)		
	Input	1 Room Temperature	1 Room Temperature	1 Room Temperature & 1 Defrosting Temperature
	Cooling	20A	3A	3A
	Heating	15A	/	/
	Defrosting	/	3A	3A
	Fan	/	/	3A
	Alarm	√		
	Electromagnetic Valve	10A	/	/
Size	Mounting Size	92*44mm		
	Size	100*51*82.5mm		
Power	Working Environment	-5~60°C, 20~90%RH	0~60°C, 20~90%RH	0~60°C, 20~90%RH
	Power Supply	110VAC±10%, 50/60Hz		
	Overall Power Consumption	<12W		



COLD ROOM TEMPERATURE  
CONTROLLER

MTC-6000 Series



Overview

MTC-6000 series is applied to the controller of seafood machine, has the functions of refrigeration, heating, defrosting and so on. It has the functions of temperature measurement, display, control, and manual power on and off; temperature sensor failure alarm and temperature over-limit alarm.

Features

- Temperature measurement, display, control, refrigeration, defrosting, fan, alarm, etc. output
- Temperature over-limit alarm, over-range, and sensor failure alarm, etc.

Application  
Scenario



Small Medium-Size  
Cold Rooms



Supermarket  
Cold Storage



Hotel



Kitchen

Technical Parameter Table

Model		MTC-5060C	MTC-6000N
Protection	Current Protection	√	/
	Phase Sequence Protection	√	/
Temperature	Temperature Control Range	-50~50℃/-58~122℉	
	Temperature Resolution	0.1℃/0.1℉	
	Temperature Accuracy	√	/
Sensor	Temperature Sensor Type	NTC (10KΩ/25℃, B value 3435K)	
	Input	1 Room & 1 Defrosting Temperature 1 Transformer	2 Room & 1 Defrosting Temperature
Output	Cooling	/	3A
	Heating	/	optional
	Defrosting	/	optional
	Fan	/	optional
	Additional Relay	/	optional
	Light	3A	
	Alarm	/	
	Electromagnetic Valve	3A	
Size	Mounting Size	92*44mm	
	Size	100*51*82.5mm	
Power	Working Environment	0~60℃, 20~90%RH	
	Communication	RS-485	
	Power Supply	110VAC±10%, 50/60Hz	
	Overall Power Consumption	<5W	<6W

ELECTRICAL CONTROL BOX  
ECB-1000 Series



Overview

ECB-1000 series is ideal for 100-240V MAX. 3HP refrigeration equipment in commercial and industrial cooling, hotels, residential freezers, refrigerators, cellars, etc.  
Featuring RS- 485 serial interface, the device can be connected via MODBUS-RTU communication.

Features

- **SAFE&QUALITY**  
The shell is made of ABS flame-retardant material, which has good waterproofness and a beautiful appearance. It features complete functions, simple operation, stable and reliable performance.
- **COMMUNICATION**  
Support RS-485 Modbus-RTU communication. WiFi+4G to connect to the cloud platform, with remote monitoring and controlling.
- **DISPLAY**  
With clock display, ultra-high temperature, ultra-low temperature alarm, sensor failure alarm.
- **MAIN GATE**  
Manually turn on/off available.
- **FUNCTION**  
Refrigeration, defrosting, fan, light four-way output; alarm.

Technical Parameter Table				
Model		ECB-1000P	ECB-1000S	ECB-1000PLUS CLOUD
Function		Thermostat	Cooling	Cooling
Temperature Control Range		-40~99°C/-40~210.2°F		
Power Supply		220V±10%, 50/60Hz	100~240VAC, 50/60Hz	100~256VAC, 50/60Hz
Overall Power Consumption		<5W	<5W	<12W
Input	Temperature Probe	√	√	√
	Defrost Probe	/	√	√
	Door Switch	/	√	/
	Multi-function1/2	/	/	√
Output	Compressor	2HP	2HP	3HP
	Defrost	/	8A	30A
	Fan/Light	/	5A	16A
	Alarm	/	5A	10A
	Four-way Valve	5A	/	/
Defrost Type	Electric	/	√	√
	Hog Gas	/	√	√
	Shutdown	√	/	/
Defrost Type	Cyclic	√	√	√
	Real-time Clock	/	√	√
Defrost Mode	Clock Mode	√	√	√
	Buzzer Alarm	/	√	√
Other Function	HACCP Function	/	√	/
	High/Low Temp Alarm	√	√	√
	°C/°F Switch	/	√	√
	ECO Mode	/	√	√
Communication		/	/	RS-485, WiFi

Application  
Scenario





ELECTRICAL CONTROL BOX

ECB-1000L ECB-3000



### Overview

ECB-1000L and ECB-3000 are integrated electrical control boxes designed for seafood machines and chillers. The shell is made of ABS flame-retardant material, which has good waterproofness, good view direction, complete functions, simple operation, stable and reliable performance.

### Features

- WATERPROOF**  
The shell is made of ABS flame-retardant material, which has good waterproofness and a beautiful appearance. It features complete functions, simple operation, stable and reliable performance.
- TEMPERATURE DIFFERENCE CONTROL**  
Adopts the temperature differential control method, and the user parameters and the manager menu are set separately.
- PROTECTION**  
Compressor delay protection can be adjusted, the compressor can work regularly when the sensor fails. Heat pump heating or electric heating wire heating can be realized according to user requirements.

Technical Parameter Table		
Model	ECB-1000L	ECB-3000
Function	Thermostat	Thermostat
Temperature Measurement Range	-40~90°C/-40~194°F	-40~90°C/-40~194°F
Temperature Accuracy	±1°C	±1°C
Temperature Control Range	-40~90°C/-40~194°F	-40~90°C/-40~194°F
Power Supply		220V/380V±10%, 50/60Hz
Input	Temperature Probe	√
	Defrost Probe	/ √
Output	Compressor	4KW 3KW
	Defrost	/ 3KW
	Alarm	√

### Application Scenario



ELECTRICAL CONTROL BOX

ECB-2030W



Overview

ECB-2030W is an electric control box with a plastic case, specially designed for small to medium size cold storage of medium and low temperature. The case adopts ABS flame-retardant material. It is touch control by a big panel and displays temperature, current, and clock at the same time. It is expandable with multiple functions due to its modular design, safe and reliable properties.

Features

- **SAFE&CONVENIENT**  
Use ABS flame-retardant material as the shell of the electric control box, and comes with a modular design, safer and more convenient.
- **INNOVATIVE LARGE DISPLAY**  
Large touch screen panel, centralized and clear display of temperatures.
- **2 MODE, MORE PROFESSIONAL**  
There are two modes of operation and non-operation to choose from, aiming at operating places such as hotels and supermarkets.
- **REMOTE MONITORING**  
RS485 communication, can remotely view and modify parameters through PC, mobile phone APP, and record and save the temperature data in real-time to realize remote centralized monitoring of cold storage.
- **FUNCTION**  
It has multiple protection functions: compressor high-pressure protection, low-pressure protection, module protection, overload protection, phase sequence protection, phase loss protection, three-phase unbalance protection, inverse time protection, etc. Cooling, defrosting, and fan three outputs, two temperature sensors.

Technical Parameter Table		
Model		ECB-2030W
Function		Cooling, Defrosting, Fan, Light, Alarm
Temperature Control Range		-40~85°C/-40~185°F
Phase		3-phase, 4-wire
Power Supply		380V±10%, 50/60Hz
Current Measurement Range		0~80A
Current Measurement Accuracy		±2A (0~30A), ±3%(others)
Current Resolution		0.1A
Temperature Probe		√
Defrost Probe		√
Input	Temperature Sensor Type	NTC (10KΩ/25°C, B value 3435K)
	Compressor	10A (5HP), 14A(7.5HP), 21A(10HP)
	Defrost	10A (5HP), 14A(7.5HP), 21A(10HP)
Output	Fan	5A
	Light	5A/220VAC
	Alarm	√
	Buzzer Alarm	√
Other Functio	HACCP Function	√
	High/Low Temp Alarm	√
Communication		RS-485

Application

Scenario



ELECTRICAL CONTROL BOX

ECB-5080S



Overview

ECB-5080S is designed for refrigerating units of low and medium-temperature cold storage. It adopts Elitech temperature controller MTC-6000N. It features a good user-friendly interface with double screens displaying current temperature and set value visually. Simple to operate and much more intelligent. With stable and reliable properties, it is a multi-functional electric control box with high-cost performance.

Features

- **REMOTE MONITORING**  
Parameters can be view or set on the website and APP remotely, data and graph reports can be viewed in real-time.
- **DUAL DISPLAY**  
Shows temperature on both temperature controllers. Multi-indicator lights show the working status of each connected device.
- **MULTI-ALARM**  
Alarms of temperature over-limit, over-range, or broken sensor.
- **SAFE CHOICE**  
It has multiple protections, high-pressure protection, low-pressure protection, module protection, overload protection, phase sequence protection, phase loss protection, three-phase unbalances protection, inverse time protection, etc.
- **FUNCTION**  
Refrigeration, defrosting, fan three-way output; two storage temperature sensors, and one defrosting temperature sensor.

Technical Parameter Table

Model		ECB-5080S
Function		Cooling, Defrosting, Fan, Alarm
Temperature Measurement Range		-50~50℃/-58~122°F
Temperature Accuracy		±1℃
Temperature Resolution		0.1℃
Temperature Control Range		-50~50℃/-58~122°F
Phase		3-phase, 5-wire
Power Supply		380V±10%, 50/60Hz
Current Measurement Range		0~80A
Current Measurement Accuracy		±2A (0~30A), ±3%(others)
Current Resolution		0.1A
Input	Temperature Probe	√
	Defrost Probe	√
	Temperature Sensor Type	NTC (10KΩ/25℃, B value 3435K)
Output	Compressor	14A(5HP), 21A(10HP), 28A(15HP),35A(20HP), 44A(25HP), 56A(30HP)
	Defrost	14A(5HP), 21A(10HP), 28A(15HP),35A(20HP), 44A(25HP), 56A(30HP)
	Fan	7A(5~15HP), 14A(20~30HP)
	Alarm	√

Application

Scenario



Small Cold Rooms



Supermarket Cold Storage



Hotel



Kitchen



ALL-PURPOSE PROTECTOR

CP-6000N



Overview

CP-6000N multi-functional protector is an instrument for monitoring and protecting electrical equipment in industrial, commercial and residential facilities. It features phase sequence protection, phase loss protection, three-phase unbalance protection and overload current protection. The protector allows maximum current up to 200A and has RS-485 communication function.

Features

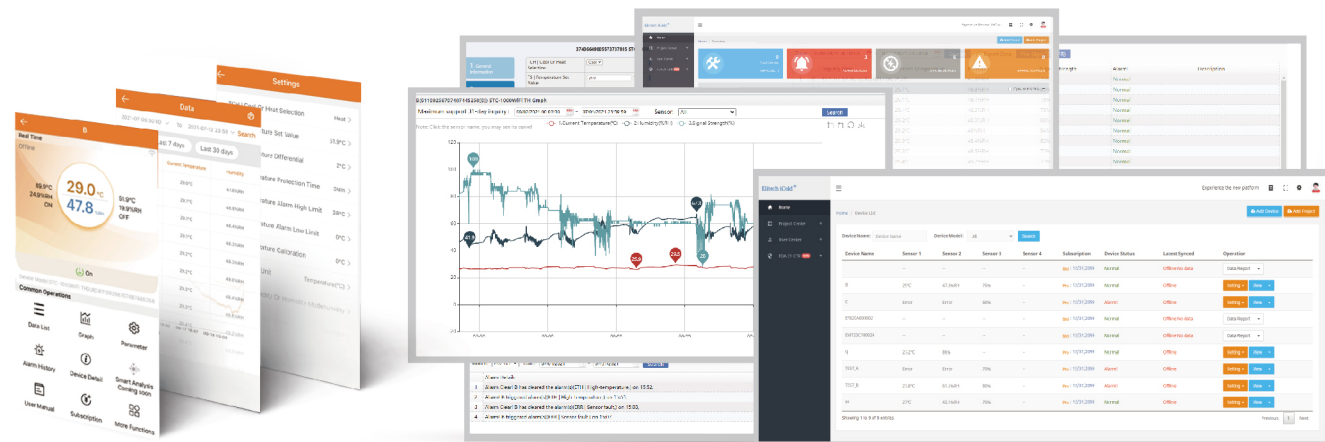
- **PHASE PROTECTION**  
New phase sequence detection and protection design, phase loss protection, unbalance, overload protection
- **CURRENT PROTECTION**  
Three-phase current detection, over-current protection up to 200A
- **HIGH ACCURACY**  
Comes with higher measurement accuracy, and it can play a protective role in case of program errors, and the measurement accuracy is up to  $\pm 2A$  (0-30A).
- **COMMUNICATION**  
With RS485 communication function, it can remotely monitor the compressor running status in real-time after networking

Technical Parameter Table

Model	CP-6000N
Current Measurement Range	0~30A, 2~60A, 30~200A
Current Protection Range	0~30A, 2~60A, 30~200A
Accuracy	$\pm 2A(0\sim 30A)$ , $\pm 5\%$ (others)
Communication	RS-485
Inverse Time Protection	√
Phase Sequence Protection	√
Overload Protection	√
Phase Loss Protection	√
Unbalance Protection	√
Protection Output	√
Size	77*34.5*58mm
Mounting Size	71*29mm
Overall Power Consumption	<5W
Working Environment	-10~55℃

# Elitech iCold®

Elitech iCold® is a cloud-based remote accessible platform. It is compatible with wireless products to realize real-time monitoring of cold storage data, automatic alerts and notifications, online data analysis and management. iCold helps users to achieve effective management of every step of cold chain and immediate assessment compliance. It complies with FDA CFR 21 Part 11 requirements and supports iOS and Android apps.



Real-time Monitoring

Alarm Management

Device Positioning

Early warning

User Management

Data Analysis



## Compliance

FDA compliant, comply with international pharmaceutical industry regulations



## Safe

Real-time monitoring, multi alarms to ensure the safety of food and drug



## Feel relieved

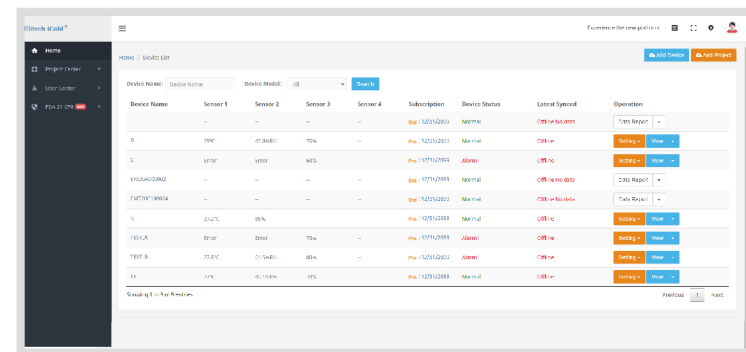
Keep monitoring 24/7 to make sure data security

PC

## Detailed Functions

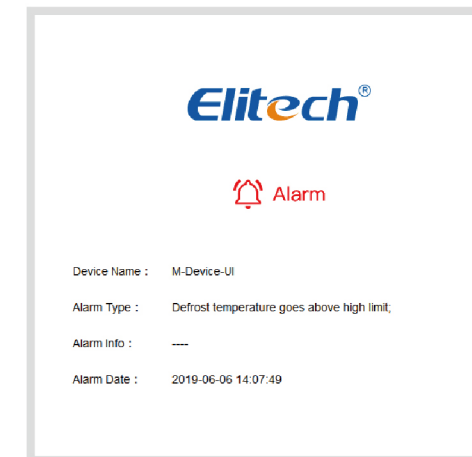
### Real-Time Monitoring

Take control of goods information anywhere at any time, including temperature, humidity and compressor working status.



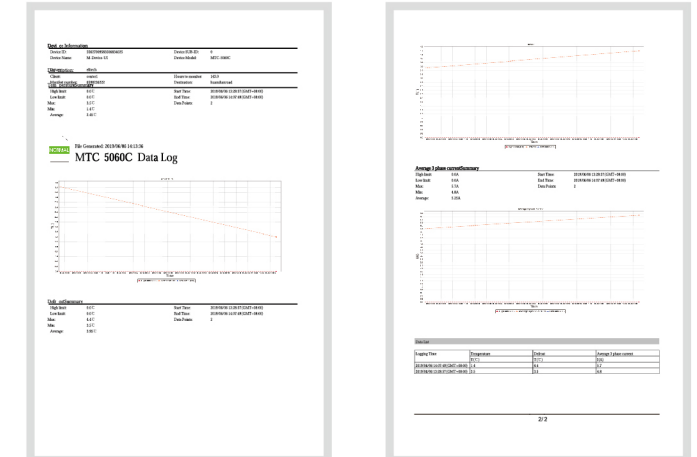
## Alarm & Notification

Temperature and humidity alarms will be sent to relevant accounts via email and app. Users can also subscribe to temperature and humidity information.



## FDA Data Analysis Report

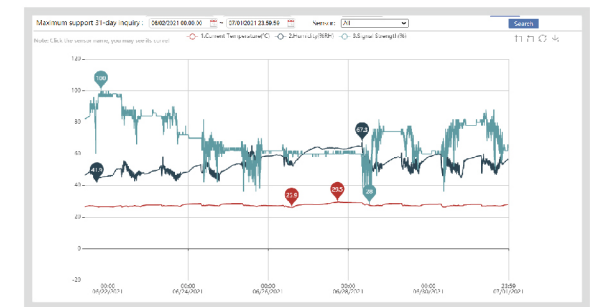
Comply with FDA and ensure compliance. Quickly generate temperature and humidity data analysis report that includes device and trip information, temperature and humidity list.



## History Query & Download

Data record history and query, export data analysis report. Support historical data query, graph analysis and export to multiple format.

Logging Time	Current Temperature	Humidity	Signal Strength	Alarm	Description
2021-07-12 16:00:00 GMT+08:00	25.0°C	47.2%RH	70%	Normal	
2021-07-12 16:05:00 GMT+08:00	25.1°C	48.8%RH	80%	Normal	
2021-07-12 16:10:00 GMT+08:00	25.1°C	48.1%RH	70%	Normal	
2021-07-12 16:15:00 GMT+08:00	25.1°C	48.2%RH	70%	Normal	
2021-07-12 16:20:00 GMT+08:00	25.2°C	48.2%RH	80%	Normal	
2021-07-12 16:25:00 GMT+08:00	25.2°C	48.2%RH	90%	Normal	
2021-07-12 16:30:00 GMT+08:00	25.2°C	48.2%RH	80%	Normal	
2021-07-12 16:35:00 GMT+08:00	25.2°C	48.2%RH	70%	Normal	
2021-07-12 16:40:00 GMT+08:00	25.2°C	48.2%RH	70%	Normal	
2021-07-12 16:45:00 GMT+08:00	25.2°C	48.2%RH	70%	Normal	
2021-07-12 16:50:00 GMT+08:00	25.2°C	48.2%RH	70%	Normal	
2021-07-12 16:55:00 GMT+08:00	25.2°C	48.2%RH	70%	Normal	
2021-07-12 17:00:00 GMT+08:00	25.2°C	48.2%RH	70%	Normal	
2021-07-12 17:05:00 GMT+08:00	25.2°C	48.2%RH	70%	Normal	
2021-07-12 17:10:00 GMT+08:00	25.2°C	48.2%RH	70%	Normal	
2021-07-12 17:15:00 GMT+08:00	25.2°C	48.2%RH	70%	Normal	
2021-07-12 17:20:00 GMT+08:00	25.2°C	48.2%RH	70%	Normal	
2021-07-12 17:25:00 GMT+08:00	25.2°C	48.2%RH	70%	Normal	
2021-07-12 17:30:00 GMT+08:00	25.2°C	48.2%RH	70%	Normal	
2021-07-12 17:35:00 GMT+08:00	25.2°C	48.2%RH	70%	Normal	
2021-07-12 17:40:00 GMT+08:00	25.2°C	48.2%RH	70%	Normal	
2021-07-12 17:45:00 GMT+08:00	25.2°C	48.2%RH	70%	Normal	
2021-07-12 17:50:00 GMT+08:00	25.2°C	48.2%RH	70%	Normal	
2021-07-12 17:55:00 GMT+08:00	25.2°C	48.2%RH	70%	Normal	
2021-07-12 18:00:00 GMT+08:00	25.2°C	48.2%RH	70%	Normal	



## APP

### ① Real Time Monitoring

Check device data and status anywhere and anytime.

### ② Data Query & Printing

Support historical data query, graphic analysis and data report printing via Bluetooth printer.

### ③ Parameter Settings

Configure device parameters remotely according to the current status of the cold room.

