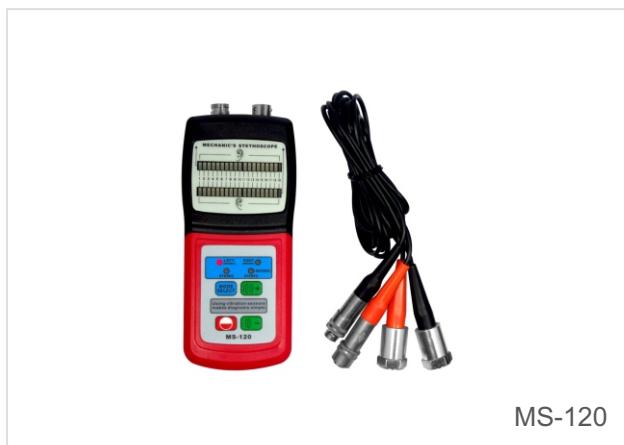


Mechanic's Stethoscope



MS-120

Specifications

Model	MS-120
Frequency Range	10~10K Hz
Input Impedance	> 20 M
Ambient Noise Permitted	100 dB
Power Supply	4 x 1.5V AAA Size (UM-4) Battery
Dimensions	156x67x28 mm
Weight	270 g (Not Including Batteries)
Standard Accessories	Main Unit
	Powerful Rare Earth Magnet
	Sensor
	Probe (Cone)
Optional Accessories	Carrying Case
	Manual Book
	Headset

Model: MS-120

Applications

Widely used in ship, automobile, chemical manufacture, metallurgy, machine, household appliance and many other fields.

- * It can pick up and amplify the weak audio signals via a sensitive piezoelectric sensor, and distinguish the normal/abnormal signal and its location.
- * Designed to help locate the source of excess bearing and machine noise easily at low cost.
- * Used to quickly locate the source of engine noise such as piston slap, worn gears and bearings, blown gaskets. Also useful tracking down dashboard rattles and squeaks.

Vibration Standard

ISO/IS2373 Motor Quality Standard According As Vibration Velocity				
Quality Rank	Rev (rpm)	H: high of shaft (mm)		
		Maximum vibration velocity rms (mm/s)		
		80<H<132	132<H<225	225<H<400
Normal	600~3600	1.8	2.8	4.5
Good (R)	600~1800	0.71	1.12	1.8
	1800~3600	1.12	1.8	2.8
Excellent (S)	600~1800	0.45	0.71	1.12
	1800~3600	0.71	1.12	1.8

