

Table Top Universal Testing Machine

Force Tester

MCT Series



A&D ...Clearly a Better Value
A&D Company, Limited
<http://www.aandd.jp>

Strength you can see!

Easy to operate with precision color touch panel.

General purpose **MCT-1150**

Load display resolution: 0.1N

High performance **MCT-2150**

Load display resolution: 0.01N

Compact

Space-saving design allows for table top use (250(W)×405(D)×711(H)mm).

Print Output

Print maximum load and maximum displacement with a connection to an AD-8126 Mini-printer.

No.	Force (N)	Posi. (mm)
1	8.29	43.64
2	9.33	50.95
3	9.69	53.86
4	11.01	63.68
5	8.88	49.64
6	9.14	51.44
7	10.43	60.42
8	10.46	61.00
9	9.79	56.38
10	10.14	58.99
11	10.39	60.79
Ave.	9.78	55.52



RS-232C

No hassle start up

Automatic calibration on start up means no waiting around. (Load cell calibration unnecessary)

High precision load cell included

Use with your favorite jigs

Use jigs from companies other than A&D as well.

*When using the M6 male screw adapter

Simple USB connection



*PC sold separately

Ideal for use in the field

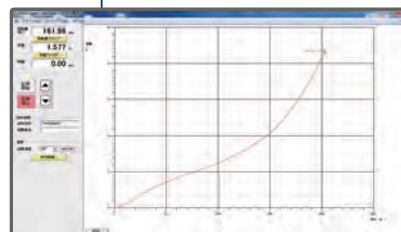
Easily adjust digital testing speed in 1mm/min increments.
Standard displacement display.

Use only the touch panel to operate

Crisp, clear touch panel is easy to operate.

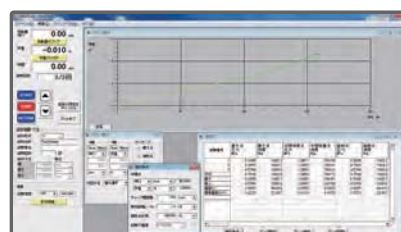
Data capture software included

Supported OS: Windows XP, Vista Business, 7Pro (32bit version)
USB: Ver 2.0 or higher



MCT-Logger [Recording software] (Included with MCT-1150)

Real-time graphing.
Calculate and display maximum value and displacement.
Or enter curve data in CSV format.



MSAT-Lite [Data processing software] (Included with MCT-2150)

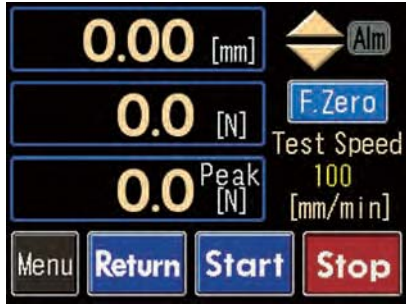
Displays operation and processing results.
Performs data analysis and graphing.
Or enter curve data in CSV format.

*Picture shows spring measurement

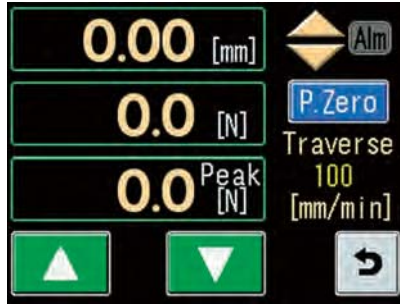


Easy to operate touch panel

Main screen



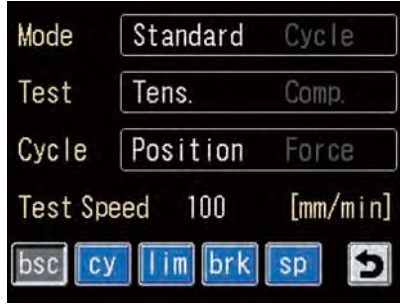
Manual operation screen



Speed setting input screen



Test condition settings screen



Menu/alarm setting screen



Perform a diverse range of material tests *Not waterproof

Switch push force test



Heat seal peel strength test



Electronic component tensile strength test



Packing container compressive strength test



Plastic bottle compressive strength test



Packing container puncture resistance test



Container seal peel strength test



Tensile strength test



Specifications

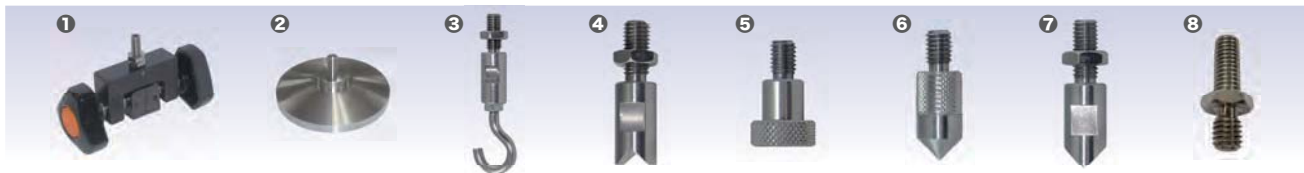
Model	MCT-1150 General purpose model	MCT-2150 High performance model
Table / floor model	Table model	
Maximum capacity	500N	
Crosshead stroke	400mm	370mm
Effective stroke *1	315mm	285mm
Crosshead speed	10-300mm/min: Within 5% of the set value *2	
Crosshead speed setting	Digital setting: 1mm/min increments within the above range	
Crosshead speed and load capacity	Full speed range at maximum capacity	
Crosshead return speed	Three speed settings: 10, 100, 300mm/min	
Load measurement accuracy	±0.2% F.S	500N~50N : ±0.2% F.S 50N~5N : Within 2% of indicator value 5N and lower : Within 0.1N
Load display resolution	0.1N	0.01N (0.1N will display for values over 100N)
Load calibration	Auto-zero function (calibration unnecessary)	
Displacement display	000.0mm (Min. 0.1mm)	00.00mm (Min 0.01mm : 0.1mm will display for values over 100mm)
Included software	MCT-Logger	MSAT-Lite
Safety mechanisms	1. Upper and lower displacement stroke limits 2. Overload limit (automatic shutdown when load cell passes 105% of rated capacity) 3. Emergency stop switch	
Dimensions (W × D × H)	250 × 405 × 711mm	
Weight	17kg	18kg
Power supply	AC90~240V 1Ø 50/60Hz	
Power consumption	90W	
Operating ambient conditions	Temperature : 5~40°C Humidity : 20~80%RH	
Recommended ambient conditions	Temperature : 23±2°C Humidity : 50±10%RH	
Standard equipment	Instruction manual, 500N capacity load cell, computer software (CD-ROM), USB cable	

*1 When using standard screw action jaws *2 Unladen

Accessories

Optional jigs

- | | | | |
|-----------------|---|-----------------|----------------------------|
| ① JM-JFM-500N | Screw action jaws | ⑤ JM-X004-500N* | Load sensitive plate Ø15mm |
| ② J-C3-1KN-U | Load sensitive plates for STA/STB
For 1KN/500N/50N Ø60mm | ⑥ JM-X005-500N* | Cone indenter |
| JM-B-500N | R2 Bending test jig | ⑦ JM-X006-500N* | Cone indenter |
| JM-B1-500N | R5 Bending test jig | JM-X007-500N* | Extension rod |
| JM-X001-500N | Attachment set (Items with ★ included) | JM-X008-500N | Load sensitive plate Ø5mm |
| ③ JM-X002-500N* | Hook | ⑧ JM-X009-500N | M6 Male screw adapter |
| ④ JM-X003-500N* | V groove indenter | JM-X010 | Lower part adapter |

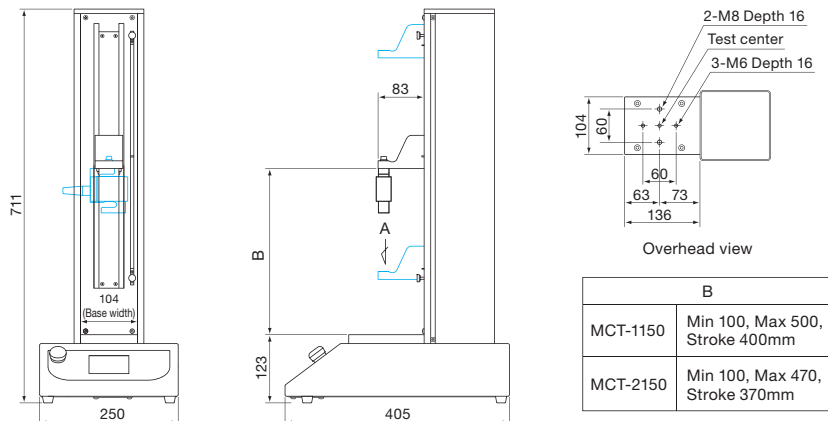


Device options

AD-8126 Mini printer



External dimensions Unit: mm



AND ...Clearly a Better Value

A&D Company, Limited

3-23-14 Higashi-Ikebukuro, Toshima-ku, Tokyo 170-0013 JAPAN
Telephone: [81](3) 5391-6132 Fax: [81](3) 5391-6148
http://www.aandd.jp



Attention to Safety!

● For proper use, read the instruction manuals carefully before use

● Appearance and/or specifications subject to change for improvement without notice.
● Contents of this catalog last updated October 2015.

* MCT-ADCC-01-PR1-15a01