

Simple concentration monitoring system.
Never miss a concentration change
with real-time readings!

Pan
REFRACTOMETER

Digital Immersion Refractometer

PAN-1

Cat. No.3596

■ Applications

- Metal-working fluids
- Water-based cleaning fluids
- Food

**Automatic
continuous
measurement!**

Once START is pressed,
the unit continues to
take measurements
every 30 seconds.

**Rugged construction
for reliable long-term
performance!**

The immersed part is
made of SUS 316
stainless-steel.



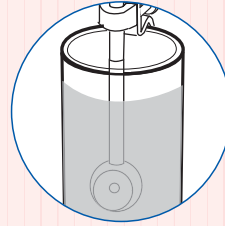
**Simply clip the
unit on to the side of
a container or pot!**

No special equipment
is needed for the
set-up.

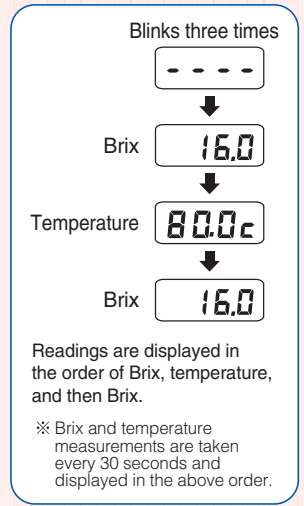
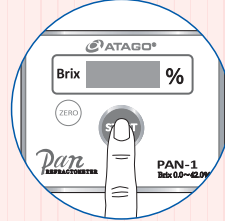
 **ATAGO®**

Measurement Method

- Submerge the prism in the liquid.
- Press the START key.
- Measurements are taken every 30 seconds.



- Press the START key.



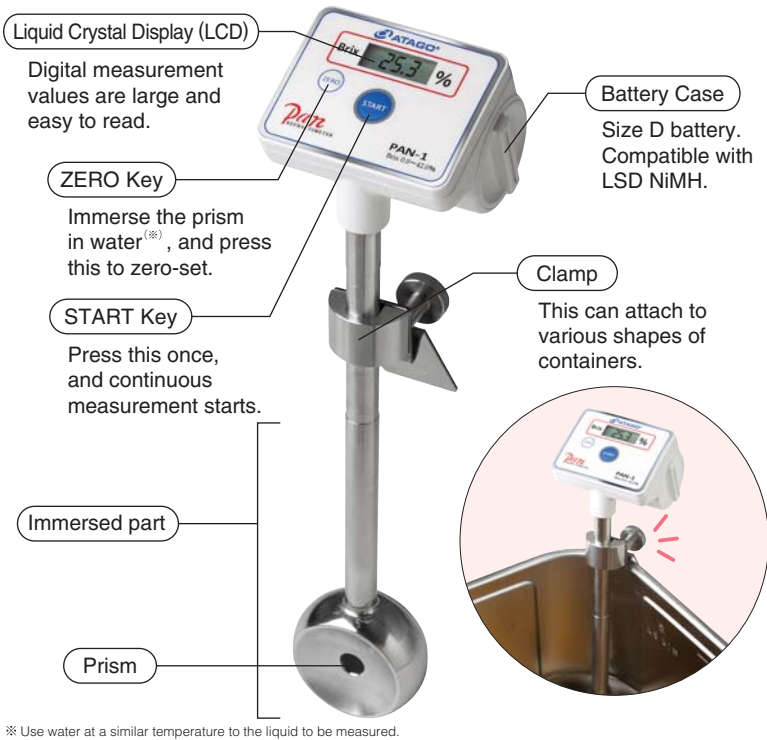
Displayed Value

This instrument measures the refractive index of a liquid and displays the converted value in "Brix," which is a percentage measurement of sugar in water. The concentration of a substance other than sugar can be calculated by creating a conversion table of the desired concentration % and corresponding Brix %. Contact ATAGO for further details.

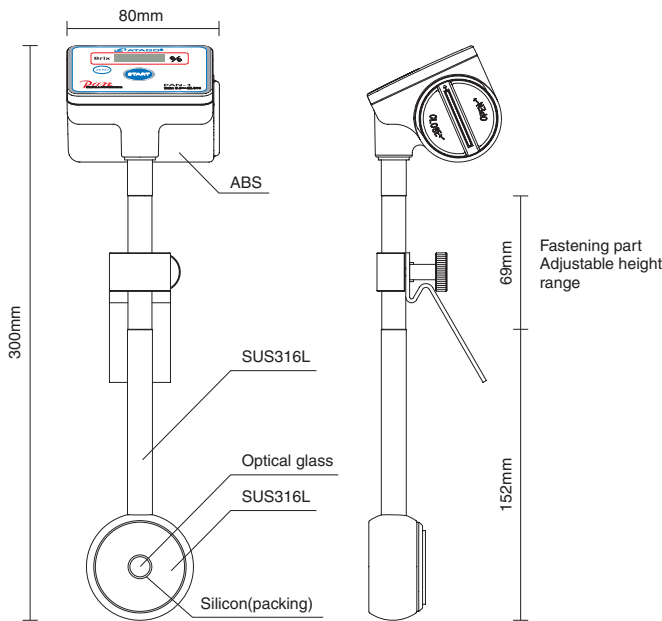
Specifications

PAN-1		Cat. No.3596
Measurement range	Brix 0.0 to 42.0% Temperature 10.0 to 99.9°C	
Resolution	Brix 0.1% Temperature 0.1°C	
Measurement accuracy	Brix ±0.2% Temperature ±0.5°C	
Measurement temperature	10 to 95°C	
International Protection class	Immersed part	IP67
	Display	IP65
Dimensions and weight	80(W)×300(L)×72(H)mm 610g (main unit only)	
Battery life	2 months(when an alkaline battery is used)	
Power supply	Size D alkaline battery × 1 Compatible with LSD NiMH.	
Ambient temperature	10 to 45°C	
Accessories	① Size D battery ② Instruction manual	

Names and Functions of Components



Dimensions



All ATAGO refractometers are designed and manufactured in Japan.

ATAGO CO.,LTD.

Headquarters: The Front Tower Shiba Koen, 23rd Floor
2-6-3 Shiba-koen, Minato-ku, Tokyo 105-0011, Japan
TEL : 81-3-3431-1943 FAX : 81-3-3431-1945
overseas@atago.net http://www.atago.net/

ATAGO U.S.A., Inc.

TEL : 1-425-637-2107 customerservice@atago-usa.com

ATAGO INDIA Instruments Pvt. Ltd.

TEL : 91-22-2833-8038 / 8076 customerservice@atago-india.com

ATAGO (THAILAND) Co., Ltd.

TEL : 662-982-8718-9 customerservice@atago-thailand.com

ATAGO BRASIL Ltda.

TEL : 55 16 3916-6000 customerservice@atago-brasil.com

ATAGO ITALIA s.r.l.

TEL : 39 2 36557267 customerservice@atago-italia.com

ATAGO CHINA Guangzhou Co., Ltd.

TEL : 86 20-38106065 info@atago-china.com



HACCP GMP GLP

ATAGO products comply with HACCP, GMP, and GLP system standards.

* Specifications and appearance are subject to change without notice.