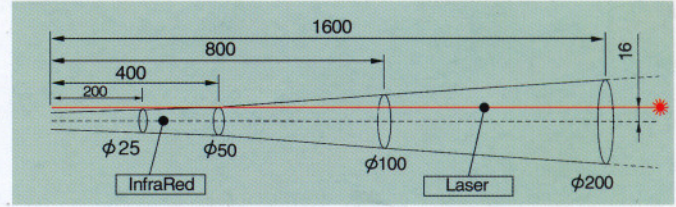


Distance (D) to Spot size(S)

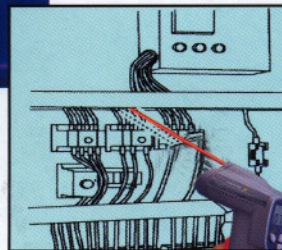
D:S=8:1



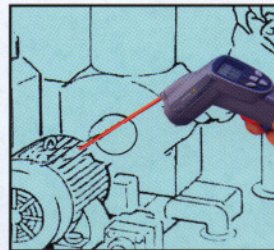
(Unit: mm)

### Features:

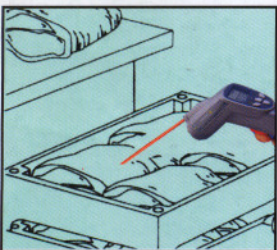
- Non-contact InfraRed thermometer with laser pointer measures to 270 °C/518 °F
- Easy to use with measuring temperature of hot or moving objects from a safe distance
- Fixed emissivity (0.95) covers 90% of surface applications
- Narrow 8:1 field of view (at 8" distance, measure 1" target)
- Built-in laser pointer to improve aim
- Fast sampling time
- Built-in analog output of 1mV/°C or °F
- °C/°F switchable and Auto Power Off
- Super Large 3-1/2 Digit (1999 count) multifunction backlit LCD with Data Hold
- Auto-hold after releasing the Measure button
- Complete with 9V battery
- Dimensions/Wt.: 159 X 79 X 57.2mm/180g



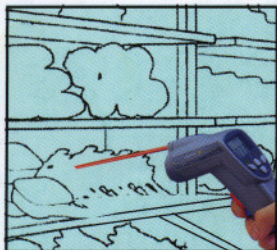
Electrical & Industrial



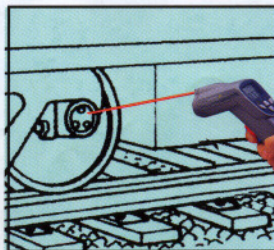
HVAC/R



Food Safety



Other Applications



Diesel

### Specifications:

Measuring Range:	-20 °C~ 270 °C or -4°F~ 518°F
Resolution :	1 °C or 1°F
Accuracy:	±2%

1. Do not allow the laser light beam impinge on any gas which can explode.

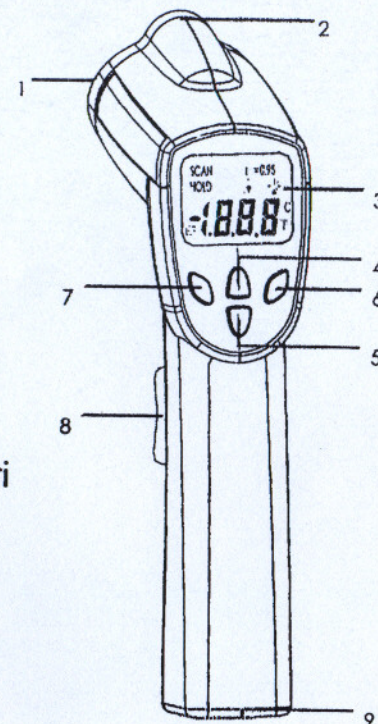
## 2. GENERAL SPECIFICATIONS

DISPLAY	3-1/2 digit (1999count) LCD with backlighting
MEAS. RANGES	-20°C to 270°C/-4°F to 518°F
SAMPLE RATE	1 sec. Approx
Spectral Response	6~14um
POWER OFF	Automatic shut off after 7 seconds
OPERATING TEMP.	0°C to 50°C (32°F to 122°F)
OPERATING RH%	Max. 80% RH
POWER SUPPLY	9V battery
WEIGHT	180g.
SIZE	159 x 79 x 57.2mm

Resolution	1°C/ 1°F
Ranges	-20°C to 270°C/-4°F to 518°F
Accuracy	±2% of reading or ±2°C±4°F
Note	1.Accuracy is given at 18 °C to 28 °C (64 °F to 82 °F), less than 80 % RH 2.Accuracy specified is for emissivity of 0.95
Emissivity settings	0.95 fixed
Distance Factor	D : S= Approx. 8:1 (D=distance, S=spot)

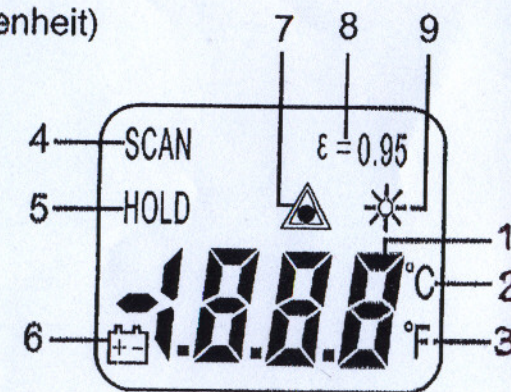
## 3. FRONT PANEL DESCRIPTION

1. IR sensor
2. Laser pointer beam
3. LCD Display
4. °F select key
5. °C select key
6. Backlight select key
7. Laser key
8. On/Hold key (Measuri
9. Battery compartment



## 4. INDICATOR

1. Digital readout
2. Temperature °C (Celsius)
3. Temperature °F (Fahrenheit)
4. Measuring indication
5. Data Hold
6. LOW battery indicator
7. Laser Point
8. Fixed emissivity (0.95)
9. Backlit



# DT 8810